



# SPINNERS GATE

DOAGH ROAD | BALLYEARL | NEWTOWNABBEY



CGI shown for illustration purposes only

## THE FULTON

4 BEDROOM SEMI DETACHED HOME  
TOTAL FLOOR AREA 1438 sq. ft. approx

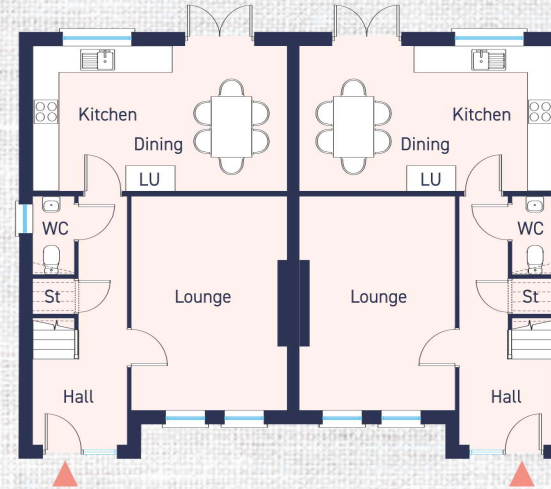


Reeds Rains  
Since 1868

T: 028 9084 3427  
www.reedsrains.co.uk

 VAUGHAN  
HOMES  
www.vaughan-homes.com

GROUND FLOOR



### GROUND FLOOR

Entrance Hall with separate WC

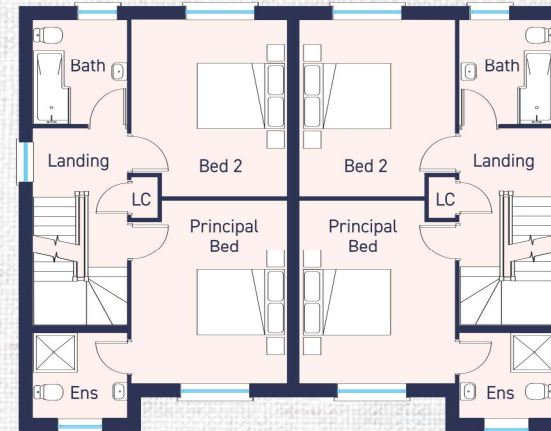
Lounge

ft 16'2" x 11'8" m 4.92 x 3.58

Kitchen / Dining

ft 19'2" x 10'9" m 5.83 x 3.30

FIRST FLOOR



### FIRST FLOOR

Principal Bedroom

ft 13'8" x 11'6" m 4.20 x 3.51

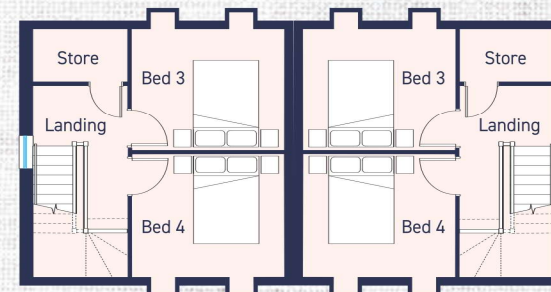
Ensuite

Bedroom 2

ft 13'3" x 11'6" m 4.03 x 3.51

Bathroom

SECOND FLOOR



### SECOND FLOOR

Bedroom 3

ft 11'6" x 9'1" m 3.51 x 2.76

Bedroom 4

ft 11'6" x 9'2" m 3.51 x 2.80

Store

ft 7'1" x 3'9" m 2.16 x 1.18

LU = Laundry Unit  
LC = Linen Cupboard

The architectural 3d perspective is for illustration purposes only and as such the elevation shown may vary from the actual finish on site. All dimensions are approx.